



THE  
MATADOR 7  
**COMING  
SOON**

## Seagoing Floating Sheerlegs 1200 Tons Lifting Capacity

Call Sign  
P H W N

---

Classification  
Bureau Veritas

---

Year of Construction  
1976

---

Dimensions	
Length o.a.	72,56 m
Beam	30,50 m
Depth	5,50 m
Min. draught	2,50 m
Max. draught	4,90 m
Gross Tonnage	3343
Nett Tonnage	1003

Accommodation  
Accommodation for 36 persons (can be increased)

---

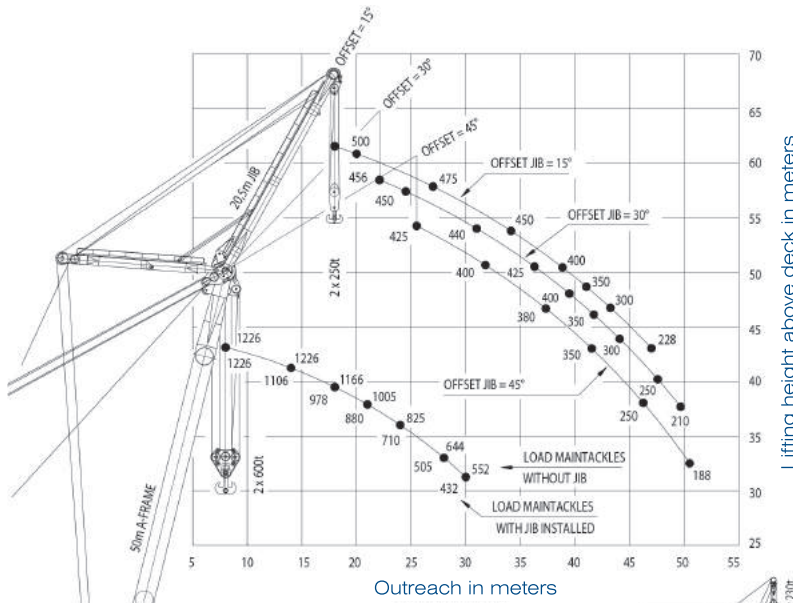
Anchor Winces  
Aft:  
1 x 10 t capacity 235 m of  
56 mm Ø chain

---

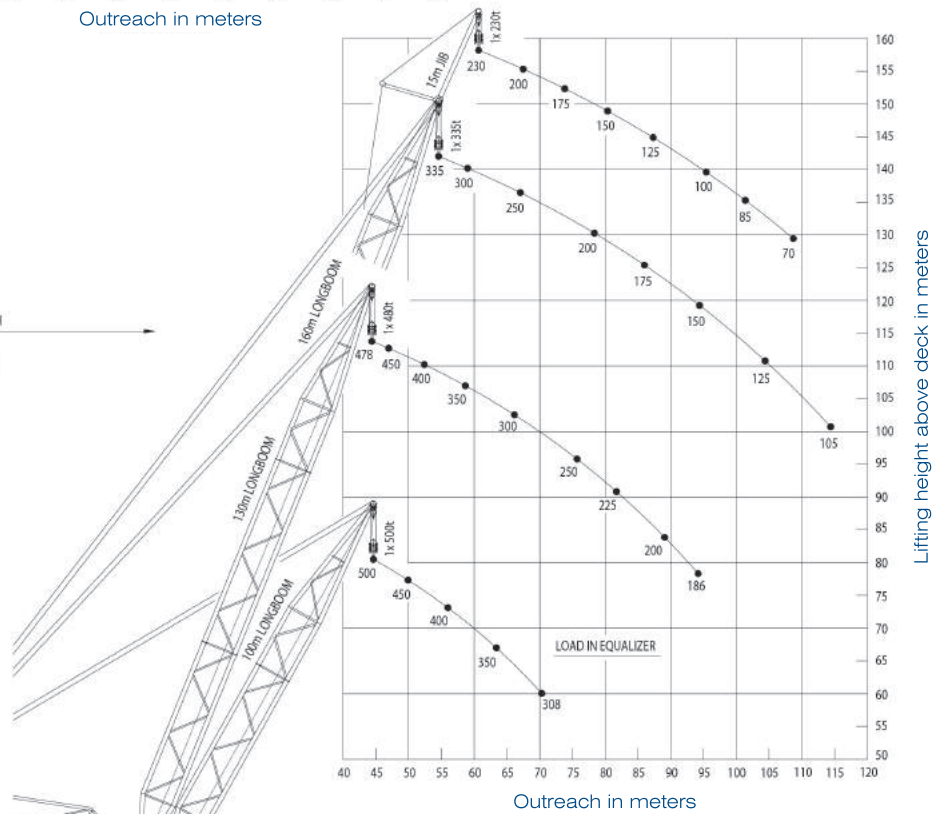
Mooring Winces  
Aft:  
3 x 10/5 t capacity 220 m of 28 mm Ø wire rope  
2 x 30/10 t capacity 1,000 m of 50 mm Ø wire rope  
Forward:  
4 x 10/5 t capacity 220 m of 28 mm Ø wire rope  
2 x 30/10 t capacity 1,000 m of 50 mm Ø wire rope

---

Lifting Capacity  
See diagram



- Both main tackles and jib tackles can operate together, load capacity on request.
- Loads in metric tonnes [ t ].
- Using deck tackles and main tackles together, loads upto 1,600 t can be raised to water level



Note : Longboom tackles and jib tackles can not be used together.