

MATADOR 2

Seagoing Floating Sheerlegs
400 Tons Lifting Capacity

Call Sign
PFWA

Classification
Bureau Veritas
1 ✕ Hull
Pontoon No Propulsion

Year of Construction
1976

Dimensions

Length o.a.	45,08 m
Beam	20,10 m
Depth	3,60 m
Draught	1,60 m
Gross Tonnage	896
Nett Tonnage	268

Accommodation
5 persons

Anchor Winces
Aft:
2 x 7,5 T winch with cap. for 275 m. of 38 mm wire rope
Forward:
1 x 7,5 T winch with cap. for 150 m. of 39 mm chain

Mooring Winches

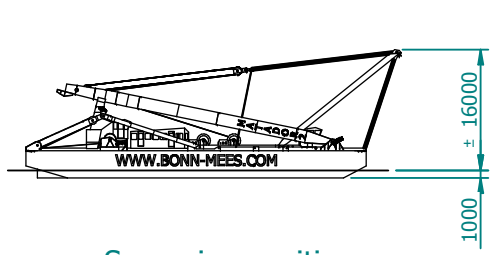
Aft:
2 x 7,5 T winch with cap. for 275 m. of 24 mm wire rope
Forward:
4 x 7,5 T winch with cap. for 275 m. of 24 mm wire rope

Lifting Capacity
See diagram

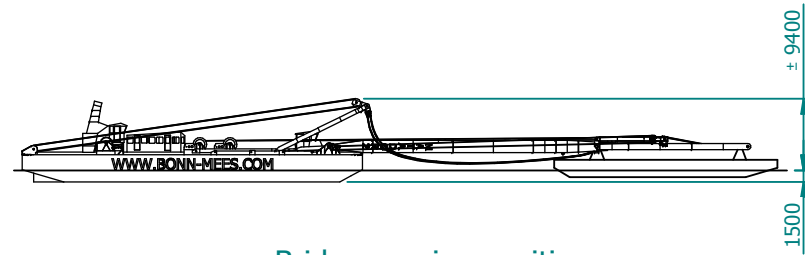
Bonn & Mees Drijvende Bokken B.V.
Sluisjesdijk 123
3087 AE Rotterdam

Tel: +31 – (0) 10 429 05 44
Fax: +31 – (0) 10 429 42 70
E-mail: info@bonn-mees.com
Website: www.bonn-mees.com

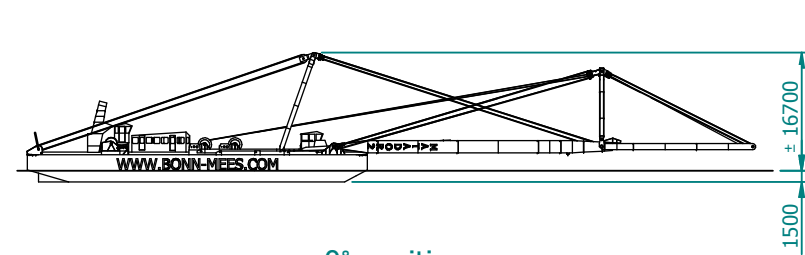




Sea going position



Bridge passing position



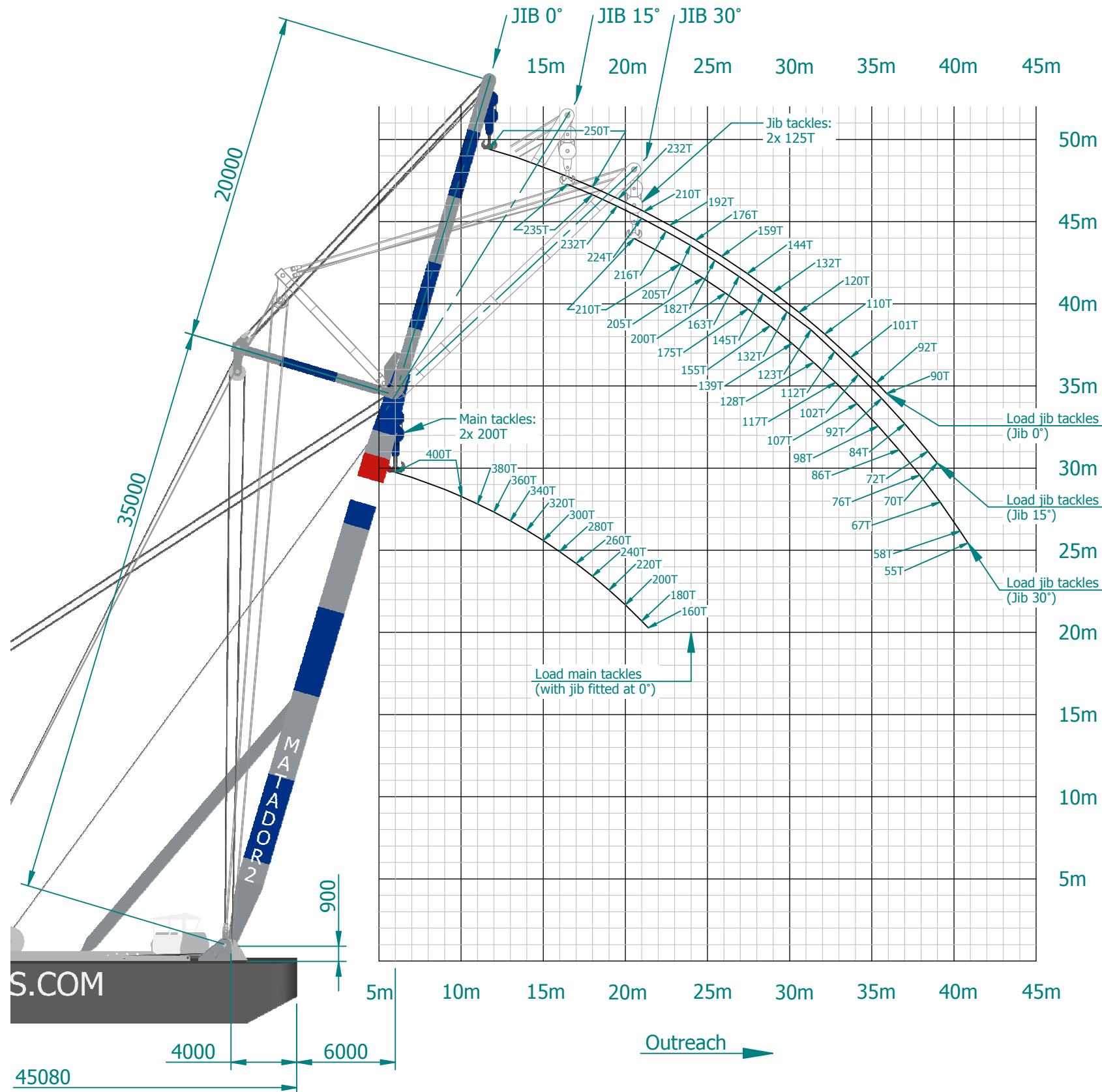
0° position

PRINCIPAL PARTICULARS:

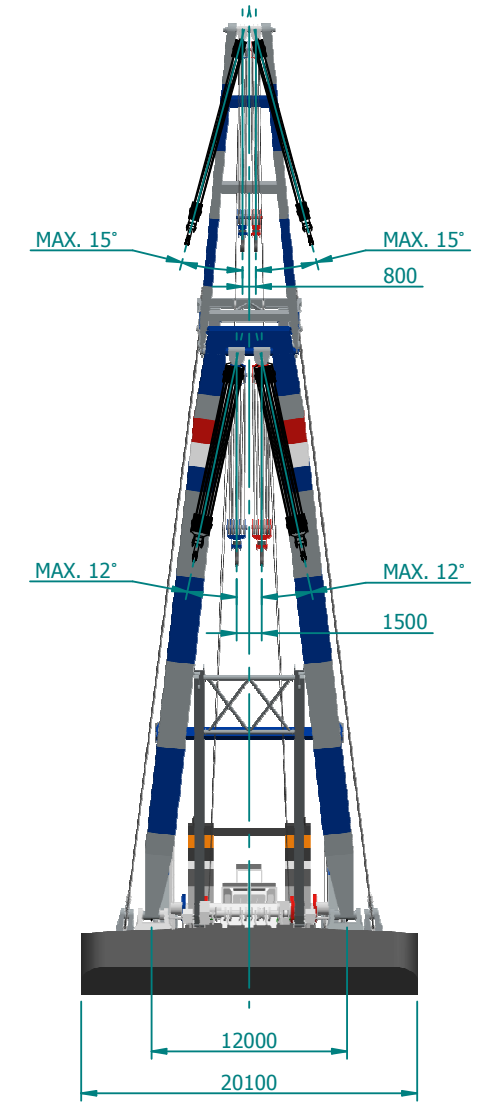
LENGHT:	pontoon	45.08m
BREADTH:	mld.	20.10m
DEPTH:	mld.	3.60m
STERN THRUSTERS:		
		N/A
BOW THRUSTER:		
		N/A
ANCHOR WINCH:		
		3x 7.5 TON
ANCHOR/MOORING WINCH:		
		6x 7.5 TON
A-FRAME HOOK SIZE ACC. TO DIN 15402:		
		#100P
JIB HOOK SIZE ACC. TO DIN 15402:		
		#63P

ALL LOADS IN METRIC TONS

MATADOR:		
CALL SIGN:		PFWJ
CLASSIFICATION:		BUREAU VERTITAS
YEAR OF COMPLETION:		1970
MATADOR 2:		
CALL SIGN:		PFWA
CLASSIFICATION:		BUREAU VERTITAS
YEAR OF COMPLETION:		1976



Lifting height above deck



Rev	Date	Drawn	Description	Approved
	13-1-2014	JB	INITIAL ISSUE	GMO
PROJECT		MATADOR & MATADOR 2		
SUBJECT		CAPACITY DIAGRAM ENGLISH		
Drawing		Originator	Size	Units
BONN & MEES		JB	A3	mm
Client		BONN & MEES		
Drawing number		2013-INTERNAL-1002		

© Copyright Bonn & Mees. This document is the property of Bonn & Mees and may contain confidential and proprietary information. It may not be used for any purpose other than that which it is supplied. This document may not be wholly or partly disclosed, copied, duplicated or in any way made use of without prior written approval of Bonn & Mees.

